

OFFICIAL NCAA BASKETBALL BOX SCORE: *** FINAL ***

Date: 03-10-90 Site: Girls Sweet Sixteen; B.G.

VISITORS (Last Name, First)

NO.	Nelson County	Tot FG		3-POINT		FT	FTA	Rebounds				PF	TP	A	TO	BLK	S	TIME
		FG	FGA	FG	FGA			OFF	DEF	TOT								
20	Robinson, Becky	6	20	0	2	2	2	2	6	8	3	14	0	4	0	1	30:27	
24	Green, Amy	3	6	0	0	1	4	4	1	0	3	7	0	2	1	0	27:52	
12	Conner, Terri	4	16	1	9	2	3	2	2	4	2	11	1	4	0	1	30:27	
14	Bradley, Erica	1	11	1	5	0	0	1	0	1	4	3	7	0	0	3	30:27	
40	Conner, Cheq.	1	2	0	0	1	1	3	4	7	4	3	0	0	0	1	23:36	
22	Wolf, Angela	1	2	0	0	0	2	3	0	3	2	2	0	1	0	0	7:57	
30	Chestnut, Al.	0	0	0	0	0	0	0	0	0	0	0	0	0	0	0	1:29	
44	Rogers, Lee Ann	0	0	0	0	0	0	0	0	0	0	0	0	0	0	0	1:33	
32	Hall, Wendy	1	1	1	1	0	0	0	1	1	0	3	1	0	0	0	1:33	
32	Carney, Michelle	1	1	0	0	0	0	0	0	0	0	2	1	0	0	0	1:33	
42	Beavers, Annette	0	0	0	0	0	0	0	0	0	0	0	0	0	0	0	1:33	
50	Ballard, Nancy	0	0	0	0	0	0	0	0	0	0	0	0	0	0	0	1:33	
TEAM REBOUNDS (INCLUDED IN TOTALS)								4	1	5								
TOTALS		18	59	3	17	6	12	19	15	34	18	45	10	16	1	6	160	
TOTAL FG	1st HALF	6/21	28.6%	2nd HALF	12/38	31.6% GAME		18/59	30.0%		DEADBALL							
3-POINT FG	1st HALF	0/3	0.0%	2nd HALF	3/14	21.4% GAME		3/17	17.6%		REBOUNDS		4					
FREE THROWS	1st HALF	3/5	60.0%	2nd HALF	3/7	42.9% GAME		6/12	50.0%									

HOME (Last Name, First)

NO.	Elkhorn City	Tot FG		3-POINT		FT	FTA	Rebounds				PF	TP	A	TO	BLK	S	TIME
		FG	FGA	FG	FGA			OFF	DEF	TOT								
20	Hullins, Barbara	1	2	0	0	2	2	0	2	2	3	4	2	0	0	1	21:09	
40	Belcher, Keri A	4	8	0	1	0	0	3	5	8	2	8	2	3	1	0	32:00	
03	Cook, Samantha	3	5	0	0	0	1	2	3	7	3	6	0	0	0	1	30:00	
05	Belcher, Julie	7	9	4	6	3	5	0	2	2	0	23	1	3	0	0	32:00	
24	Spake, Stacey	4	8	0	1	6	9	0	3	3	3	14	3	3	1	3	32:00	
10	Deel, Donna	0	1	0	0	2	2	0	2	2	0	2	1	0	0	1	10:36	
44	Deel, Dana	0	0	0	0	0	0	0	0	0	0	0	0	0	0	0	0:00	
25	Sifers, Heather	0	1	0	0	0	0	0	0	0	0	0	0	0	0	0	0:00	
TEAM REBOUNDS (INCLUDED IN TOTALS)								2	2	4								
TOTALS		19	34	4	8	13	20	5	21	26	11	37	11	16	2	6	160	
TOTAL FG	1st HALF	13/25	52.0%	2nd HALF	6/9	66.7% GAME		19/34	55.9%		DEADBALL							
3-POINT FG	1st HALF	2/4	50.0%	2nd HALF	2/4	50.0% GAME		4/8	50.0%		REBOUNDS		3					
FREE THROWS	1st HALF	0/0	0.0%	2nd HALF	13/20	75.0% GAME		13/20	75.0%									

OFFICIALS: B. F. Behrendt, Raymond Gabbard, Alt. - L. Holmes SCORE BY PERIODS

Technical: None

Nelson County	11	4	18	12	=	45
Elkhorn City	16	14	14	13	=	57

Attendance: 3,200

COMMENTS: POINTS OFF TURNOVERS

Nelson County 10 Elkhorn City

SECOND CHANCE POINTS

18 Nelson County

9 Elkhorn City

Player	Team	Elmhorn City	Time	Score	Nelson County	Player	Team
Mullins, Barbara, Belcher, Mari A, Cook, Samantha, Spake, Stacey		Ball to Lady Cougars			Conner, Terri, Bradley, Erica, Robinson, Becky, Green, Amy, Cheatham, Al.		
2-2 100%	10-13 76.3%	Mullins, Barbara 1 & Bonus - made both	4 7:11		Foul on Green, Amy	2	10
3-5 20.0%	17-20 26.6%	3 ft Left Angle Jump shot by Spake, Stacey	4 7:11 *48-23				
			4 6:50 *48-23		Sub In: Conner, Cheq. Out: Cheatham, Al.		
1	4	Foul on Cook, Samantha	4 6:43				
2	3	Foul on Belcher, Mari A	4 6:23		Green, Amy 1 & Bonus - missed 1st	0-3 100.0%	3-3 23.3%
			4 6:21		Green, Amy 1 & Bonus - made	1-4 25.0%	4-10 40.0%
4-7 37.3%	18-31 29.0%	Driving Layup by Spake, Stacey	4 6:21 *48-24				
		REB: 24 A: 11 BLK: 1 TO: 14 FF: 3	4 6:17		REB: 25 A: 8 BLK: 1 TO: 14 FF: 10		
		S: 3 FT: 10-13 76.3% FG: 12-21 28.0%	T I M E - O U T Nelson County No. 2		S: 5 FT: 4-10 40.0% FG: 14-43 28.3%		
4-8 30.0%	19-32 23.3%	Driving Layup by Belcher, Mari A	4 6:17		Sub In: Wolf, Angela Out: Conner, Cheq.		
			4 4:49 *32-34				
3-5 33.3%	12-13 20.0%	Spake, Stacey 1 & Bonus - made both	4 4:18		Foul on Bradley, Erica	3	11
			4 4:18 *34-34				
			4 4:10 *34-36*		14 ft Lane Jump shot by Robinson, Becky	6-10 31.0%	10-23 26.3%
			4 2:29		Foul on Green, Amy	1	12
		REB: 23 A: 11 BLK: 1 TO: 13 FF: 3	4 2:29		REB: 22 A: 8 BLK: 1 TO: 13 FF: 12		
		S: 5 FT: 12-13 20.0% FG: 13-32 23.3%	T I M E - O U T No. 2 Elmhorn City		S: 5 FT: 4-10 40.0% FG: 15-33 28.3%		
6-2 75.0%	13-17 76.4%	Spake, Stacey 1 & Bonus - made 1st missed 2nd	4 2:29 *33-36				
1	6	Foul on Spake, Stacey	4 2:16		Robinson, Becky 1 & Bonus - made both	2-2 100%	6-12 50.0%
			4 2:16		Foul on Bradley, Erica	4	13
3-5 33.3%	13-19 78.3%	Belcher, Julie 1 & Bonus - made both	4 2:13 *37-38				
			4 2:16 *37-40*		4 ft Lane Follow by Wolf, Angela	1-2 20.0%	16-27 26.0%
			4 1:13		Foul on Wolf, Angela	2	14
			4 1:13		Subs In: Rogers, Lee Ann, Mall, Wendy, Carney, Michelle, Seavers, Annette, Ballard, Nancy		
					Out: Conner, Terri, Bradley, Erica, Robinson, Becky, Wolf, Angela, Green, Amy		
6-3 66.6%	13-20 75.0%	Spake, Stacey 1 & Bonus - missed 1st	4 1:13				
		Sub In: Deel, Dana Out: Cook, Samantha	4 0:20				
		Sub In: Bifers, Heathe Out: Mullins, Barbara	4 0:23				
			4 0:23		37-41* 3 pt 21 ft Left Angle Bank by Mall, Wendy	1-1 100%	17-28 22.3%
					Assist by Carney, Michelle	1	3
			4 0:13		37-43* 14 ft Left Base Line Jump shot by Carney, Michelle	1-1 100%	18-29 26.2%
					Assist by Mall, Wendy	1	10

BOX SCORE: * OFFICIAL FIRST HALF * Date: 03-15-90 Site: Girls Sweet Sixteen; A.G. Attendance:

Team: Nelson County

NO.	NAME	TOTAL FG		3-POINT		FT	FTA	REB				PF	TP	A	TO	BLK	S	TIME
		FG	FGA	FG	FGA			I	O	D	T							
20	Robinson, Becky	2	8	0	1	0	0	0	4	4	0	4	0	2	0	0	15:00	
24	Green, Amy	1	3	0	0	0	1	1	1	2	0	2	0	1	1	0	15:00	
12	Conner, Terri	2	7	0	3	2	3	0	2	2	1	6	0	3	0	0	15:00	
14	Bradley, Erica	0	2	0	0	0	0	0	0	0	1	0	4	3	0	0	16:00	
40	Conner, Cheq.	1	1	0	0	1	1	2	3	5	1	3	0	0	0	0	16:00	

TEAM TOTALS 6 / 21 0 / 4 3 5 3 10 13 3 15 4 9 1 0 80

Percentages: HALF----- FG 6/ 21 28.6% 3-PT. 0/ 4 0.0% FT 3/ 3 100.0%
 Period 1 3/ 13 38.5% 0/ 3 0.0% 1/ 1 100.0%
 Period 2 1/ 8 12.5% 0/ 1 0.0% 2/ 4 50.0%

Team: Elkhorn City

NO.	NAME	TOTAL FG		3-POINT		FT	FTA	REB				PF	TP	A	TO	BLK	S	TIME
		FG	FGA	FG	FGA			I	O	D	T							
20	Mullins, Barbara	0	1	0	0	0	0	0	0	0	2	0	1	0	0	1	9:53	
40	Belcher, Kari A	3	7	0	1	0	0	2	2	4	1	6	1	1	0	0	16:00	
03	Cook, Samantha	3	5	0	0	0	0	0	4	4	1	6	0	2	0	1	16:00	
03	Belcher, Julie	6	8	4	6	0	0	0	1	1	0	16	1	1	0	0	16:00	
24	Spake, Stacey	1	4	0	0	0	0	0	2	2	2	2	4	0	1	1	16:00	
13	Deel, Donna	0	0	0	0	0	0	0	2	2	0	0	1	0	0	0	6:07	

TEAM TOTALS 13 / 25 4 / 7 0 0 2 12 14 6 30 8 4 1 3 80

Percentages: HALF----- FG 13/ 25 52.0% 3-PT. 4/ 7 57.1% FT 0/ 0 0.0%
 Period 1 7/ 14 50.0% 2/ 4 50.0% 0/ 0 0.0%
 Period 2 6/ 11 54.5% 2/ 3 66.7% 0/ 0 0.0%

OFFICIALS: B. F. Behrendt, Raymond Gabbard, Alt. -L. Holmes

Technical: None

SCORE BY PERIODS

Nelson County	11	4	=	15
Elkhorn City	16	14	=	30

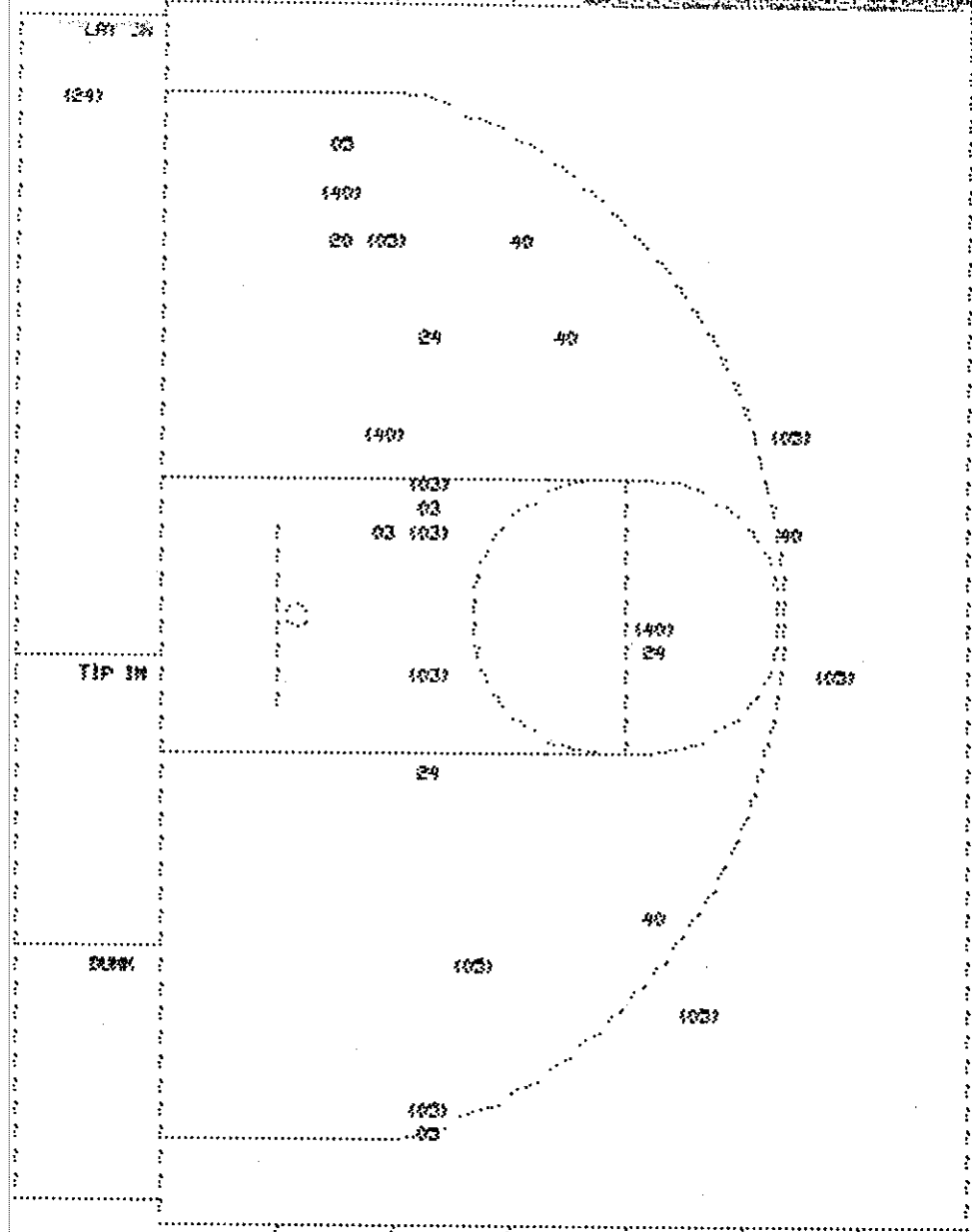
Nelson County "Lady Cardinals" vs Elkhorn City "Lady Cougars"
1st Half Play by Play

PAGE : 2

Tip off at 1:30 EST on 03/15/90 at Girls Sweet Sixteen; R.S.
Produced by the N.H.S.A.A. Stat Crew with FINAL III - a Product of LEXICON SPORTS™

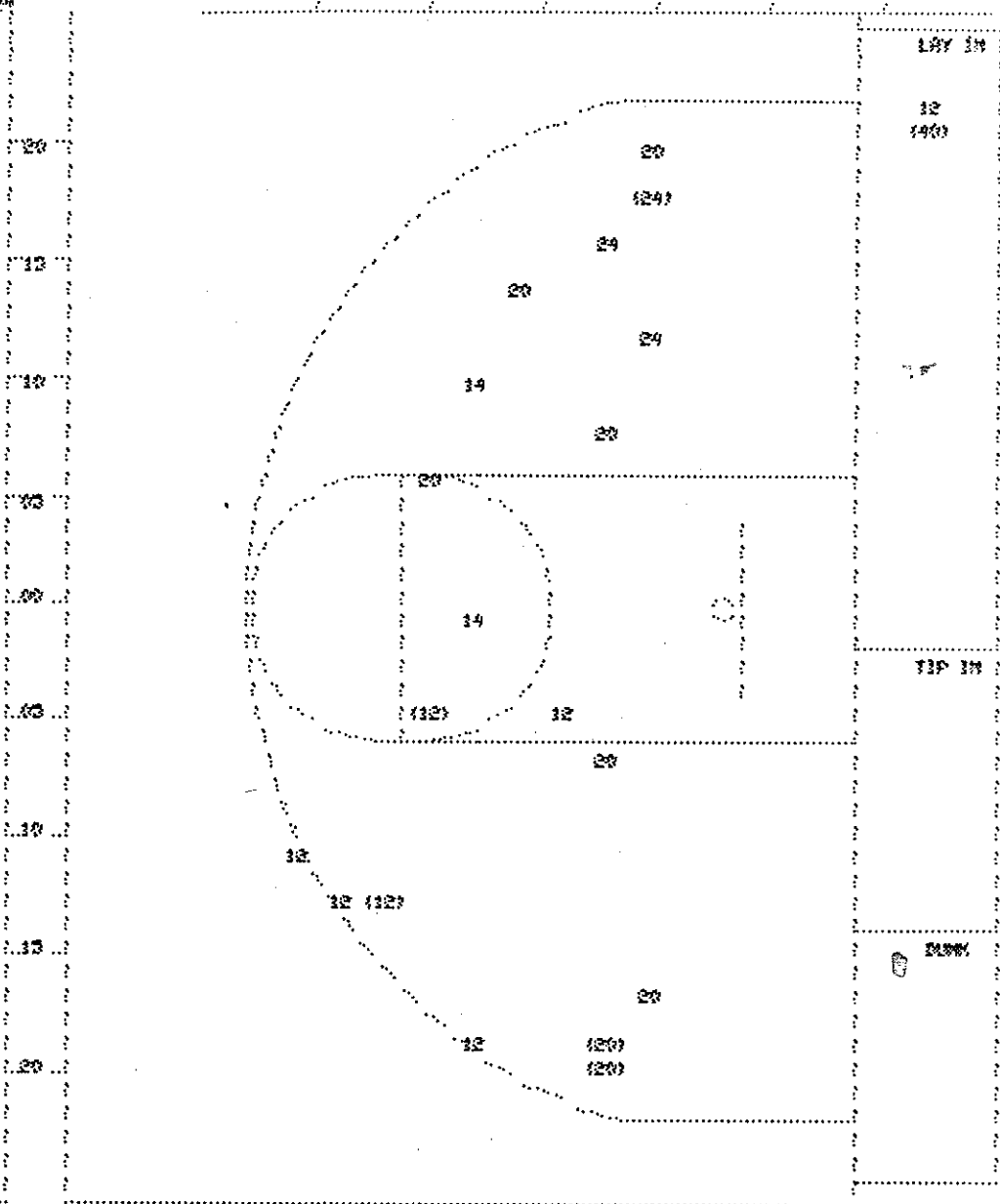
Player	Team	Elkhorn City	Time	Score	Nelson County	Player	Team
Mullins, Barbara, Belcher,	Kari A, Cook, Samantha, Belcher, Julie, Spake, Stacey	Ball to Lady Cougars			Robinson, Becky, Green, Amy, Conner, Terri, Bradley, Erica, Conner, Cheq.		
2	3	Foul on Spake, Stacey	2 7:55	18-12*	13 ft Lane Jump shot by Conner, Terri	2-3	40.0X 6-19 42.0X
			2 7:44				
			2 7:44		Conner, Terri 1 Free Throw - missed	0-1	00.0X 1-2 00.0X
2-3	88.0X 8-12 51.0X	6 ft Lane Turnaround by Cook, Samantha	2 7:41		Foul on Conner, Cheq.	1	2
1	5	Assist by Belcher, Julie	2 7:27	*18-13			
1	4	Foul on Mullins, Barbara	2 7:20				
		Sub In: Deel, Donna Out: Mullins, Barbara	2 7:20	18-15*	Conner, Terri 1 3 Bonus - made both	2-3	66.0X 3-4 75.0X
			2 6:07				
3-7	71.0X 9-18 30.0X	3 pt 22 ft Straight Away Jump shot by Belcher, Julie	2 5:17		Foul on Conner, Terri	1	3
			2 5:10	*21-15			
		REB: 8 A: 3 BLK: 0 TD: 3 FF: 4	2 4:53				
		S: 3 FT: 0-0 00.0X FB: 9-18 50.0X	T I M E - O U T Nelson County No. 1		REB: 11 A: 4 BLK: 1 TD: 6 FF: 3	S: 0 FT: 3-4 75.0X FB: 6-17 35.0X	
1	2	Foul on Cook, Samantha	2 4:43				
6-8	75.0X 10-23 30.0X	3 pt 23 ft Left Angle Jump shot by Belcher, Julie	2 4:43		Green, Amy 1 3 Bonus - missed 1st	0-1	00.0X 3-5 50.0X
4	6	Assist by Spake, Stacey	2 3:58	*24-15			
1-4	75.0X 11-21 32.0X	4 ft Lane Turnaround by Cook, Samantha	2 3:19	*25-15			
1	7	Assist by Belcher, Kari A					
3-7	42.0X 12-23 32.0X	18 ft Right Base Line Jump shot by Belcher, Kari A	2 2:13	*28-15			
1	8	Assist by Deel, Donna					
1-4	25.0X 13-24 34.0X	Driving Layup by Spake, Stacey	2 1:13	*30-15			
0-1	101-1 8-1 101-14	Rebound by Cook, Samantha	2 0:00				

Player	Team	Elkhorn City	Time	Score	Nelson County	Player	Team
Mullins, Barbara, Belcher, Mari A, Cook, Samantha, Belcher, Julie, Spake, Stacey		Ball to Lady Cougars			Robinson, Becky, Green, Amy, Conner, Terri, Bradley, Erica, Conner, Cheq.		
1-1	100X 1-1	100X 3 pt 20 ft Left Side Jump shot by Belcher, Julie	1 7:14	0-2*	18 ft Right Angle Jump shot by Conner, Terri	1-1	100X 1-1 100X
		Assist by Spake, Stacey			Assist by Bradley, Erica		1
			1 7:23	*3-2			
			1 7:33		Foul on Bradley, Erica		1
2-2	100X 2-3	66.5X 13 ft Left Side Jump shot by Belcher, Julie	1 8:47	3-4*	18 ft Right Side Jump shot by Robinson, Becky	1-1	100X 2-2 100X
			1 8:26	*3-4			
			1 8:37	3-5*	18 ft Right Side Jump shot by Robinson, Becky	2-2	100X 3-3 100X
					Assist by Bradley, Erica		2
			1 8:20	3-8*	18 ft Left Side Jump shot by Green, Amy	1-1	100X 4-3 80.0X
					Assist by Bradley, Erica		3
			1 4:22				
1-1	100X 3-8	37.5X 7 ft Lane Bank by Cook, Samantha	1 3:13	*7-8			
		Assist by Mullins, Barbara					
1-2	20.0X 4-10	40.0X 8 ft Right Side Follow by Belcher, Mari A	1 2:38	*9-8			
2-3	66.5X 5-11	43.4X 14 ft Lane Jump shot by Belcher, Mari A	1 1:32	*11-8			
			1 1:27	11-10*	Driving Layup by Conner, Cheq.	1-1	100X 5-12 41.5X
					Assist by Bradley, Erica		4
			1 1:27				
			1 1:27	11-11*	Conner, Cheq. 1 Free Throw - made	1-1	100X 1-1 100X
2-3	60.0X 6-12	30.0X 16 ft Right Side Jump shot by Belcher, Julie	1 1:01	*13-11			
		Assist by Spake, Stacey					
4-6	66.5X 7-13	32.8X 3 pt 22 ft Right Angle Jump shot by Belcher, Julie	1 0:30	*15-11			
		Assist by Spake, Stacey					



Ellhorn City

Player	Player	Player	Player
00 - Mullins, De 0 / 1 0.00			
40 - Belcher, M 1 / 7 42.80			
00 - Cook, Sam 1 / 3 33.30			
00 - Belcher, J 6 / 8 75.00			
24 - Spake, Ste 1 / 4 25.00			
Layups 1-9 Ft 10-13 Ft Over 13 Ft 3 Pointers Total			
1 / 1 4 / 7 2 / 4 2 / 5 4 / 7 13 / 23			
100.00 37.10 26.00 33.30 37.10 22.00			



Nelson County

Player	Player	Player	Player
00 - Robinson, 2 / 8 25.00			
24 - Green, Amy 1 / 3 33.30			
12 - Conner, Ye 2 / 7 28.50			
14 - Bradley, E 0 / 2 0.00			
40 - Conner, Sh 1 / 1 100.00			
Layups 1-9 Ft 10-13 Ft Over 13 Ft 3 Pointers Total			
1 / 2 0 / 3 1 / 3 4 / 8 0 / 3 5 / 21			
20.00 0.00 20.00 20.00 0.00 28.50			